



FULL TURN KEY Package

Fixed Cost

\$555,500

Lot 4417 Westbrook Estate, Tarneit, VIC 3029

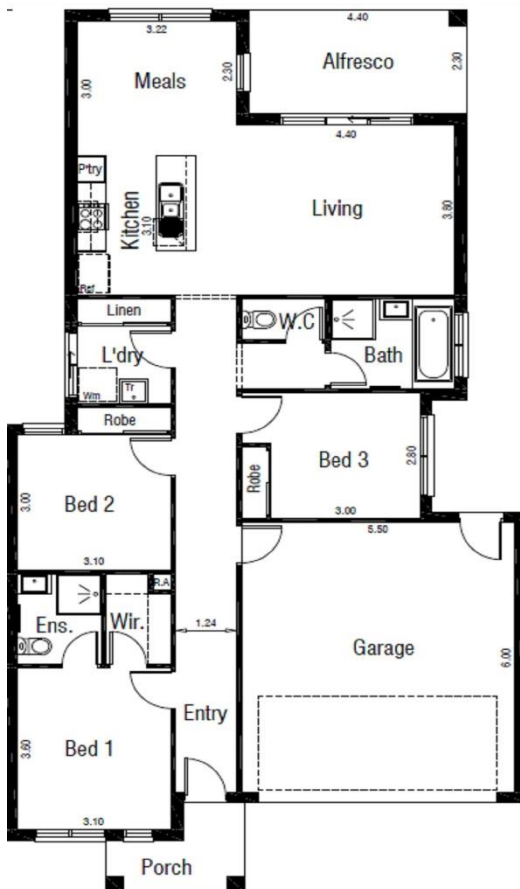
336m²



3	2	2
		

HOUSE & LAND PACKAGE INCLUDES:

- ALL DESIGN GUIDELINES
- CHOICE OF FACADE'S
- 2590 HIGH CEILINGS
- FLY SCREENS AND WINDOW LOCKS
- FENCE
- 20MM STONE BENCH TOPS TO KITCHEN
- FLOOR COVERINGS BONUS
- COLOURED CONCRETE DRIVEWAYS & PATH
- LANDSCAPE FRONT AND REAR
- **PLUS MUCH MORE!**



Images for illustration purposes only and may include examples of upgrade options along with landscaping, blinds and décor light fittings. Site costs need to be confirmed with Central Property Sales Representative if they are fixed or an allowance has been made. Design guidelines are included however subject to developer's final approval. Pricing may vary subject to land availability.

Bing Li

0404 537 624

bing.li@cpmgroup.com.au