

SOHO  
LIVING

# HOUSE & LAND PACKAGE



## CAPESIDE

3 2 1

FIXED PRICE

# \$529,950

LOT 4929 TIMOR ROAD, TRUGANINA  
WESTBROOK

HOME SIZE 13SQ  
LAND SIZE 213m<sup>2</sup>



## SOHO LIVING TURNKEY INCLUSIONS

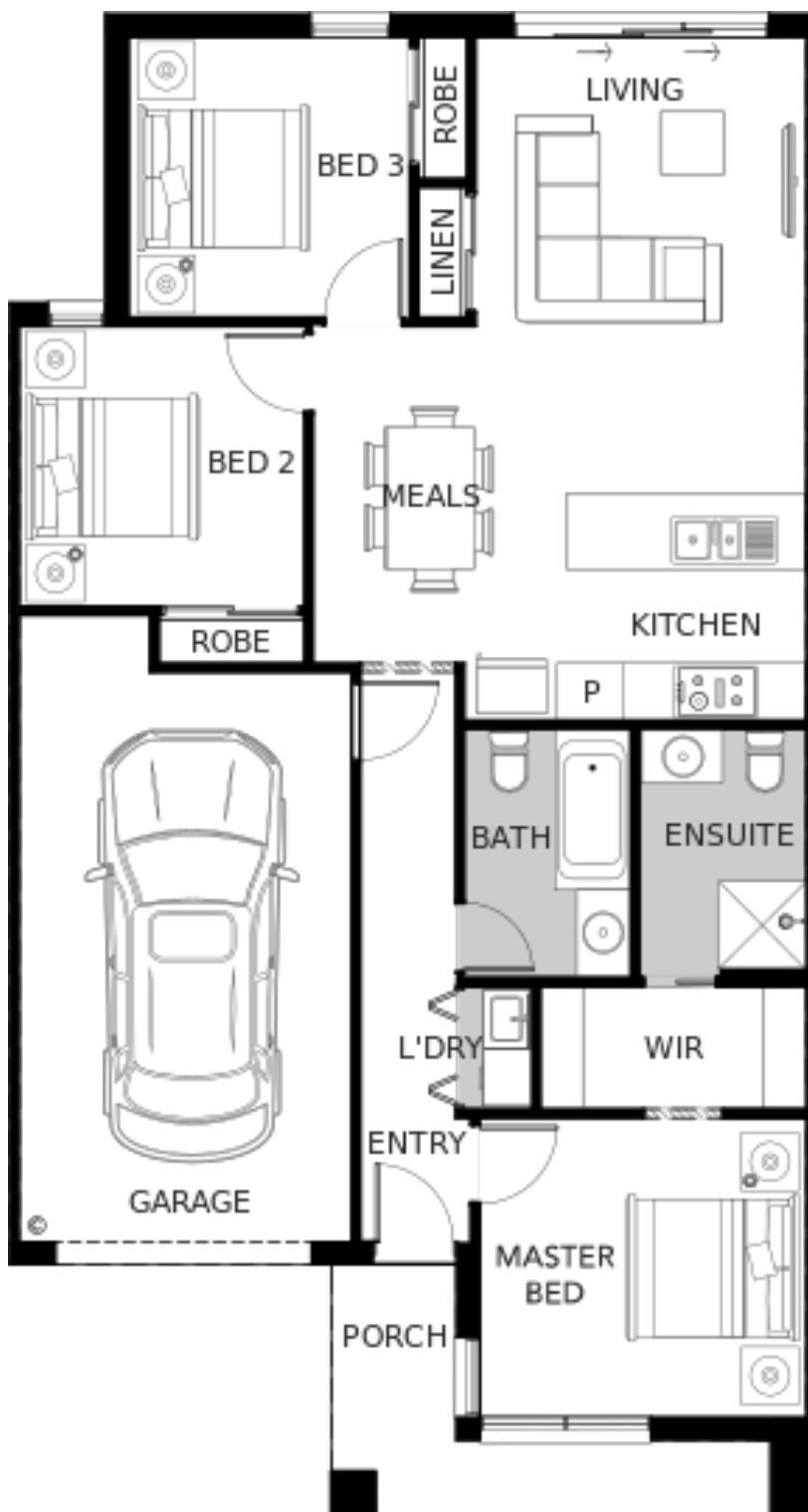
- Architectural façade
- 2590mm ceiling heights to ground floor
- 20mm stone benchtops including waterfalls (*Design specific*)
- 20mm stone benchtop to ensuite and bathroom
- SMEG kitchen appliances including dishwasher
- Premium splashback to kitchen
- Coloured concrete driveway and front path
- Timber laminate Flooring to living areas
- Coloured concrete driveway
- Quality carpet to bedrooms
- Tiled shower bases
- Colorbond sectional garage door with duel remotes
- Sliding Robe doors
- LED downlights
- Landscaping to front and rear including letterbox, clothesline and fencing
- All Developer and design requirements

13 SOHO | SALES@SOHOLIVING.COM.AU

SOHOLIVING.COM.AU

# \$529,950

LOT 4929 TIMOR ROAD, TRUGANINA  
WESTBROOK



Whilst care has been taken in the preparation of this flyer, the particulars are not to be construed as containing any representation of the facts upon which any interested party is entitled to rely. This flyer is intended to provide general information only and does not constitute an offer to supply. All photographs, plans, maps and drawings are illustrative only and may not be to scale. Lot layout, lot size dimensions, easements, landscape treatments and final road layout are subject to change and conditional on authority approval. All interested parties should make their own enquires. Information contained is correct at the time of printing. \* Source: Victorian Planning Authority | CDB-U 50036