

**CLARINDA 19
TITLE: TITLED
LAND**

\$682,000
SITE COSTS & FULL TURNKEY
10K LESS WITH FHOG

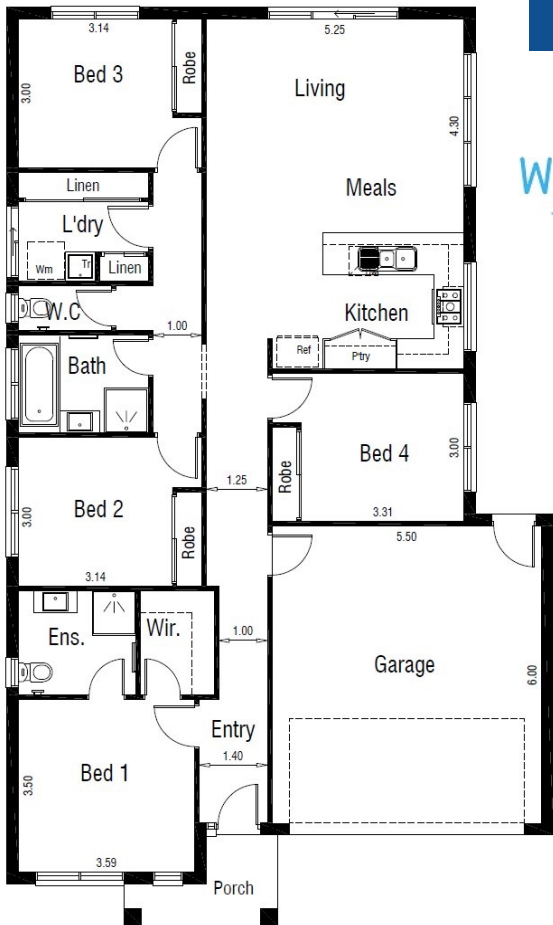
Lot 5038 Wolvering Crescent, TRUGANINA

WESTBROOK
ANOTHER DENNIS FAMILY COMMUNITY

384m²



4	2	2
		



HOUSE & LAND PACKAGE INCLUDES:

- ALL DESIGN GUIDELINES
- CHOICE OF FACADE'S
- 2590 HIGH CEILINGS
- FRONT & REAR LANDSCAPING
- FENCES, BLINDS & LETTERBOX
- 900MM APPLIANCES
- 20MM STONE KIT, ENSUITE & BATHROOM
- HEATING AND COOLING
- COLOURED CONCRETE DRIVEWAYS & PATH'S
- **PLUS MUCH MORE!**

Images for illustration purposes only and may include examples of upgrade options along with landscaping, blinds and décor light fittings. Site costs need to be confirmed with Central Property Sales Representative if they are fixed or an allowance has been made. Design guidelines are included however subject to developer's final approval. Pricing may vary subject to land availability.

Jason Sbriglio
0402 365 240
Jason@cpmcgroup.com.au