



## ANGELICA 2747

Suited to lot size of 10.5m x 25m

# \$745,088

**Lot 5526 Cammiss Way  
Westbrook Edge, Truganina**

Fixed Price House and Land Package\*

The contemporary design of the double-storey Angelica 2747 is well suited to land with a frontage of 10.5m or more. The Angelica 2747 is the perfect match for a smaller family looking for their dream home with this expansive plan, including 4 generously sized bedrooms. The Angelica 2747 features a large master bedroom with an enormous walk-in robe, making it the perfect retreat to privacy. The well-appointed kitchen and large walk-in pantry are the heart of the home, adjoining the spacious meals and family room. The Angelica 2747 is the perfect home for a family beginning to grow or an investor looking to capitalize on today's rental market.

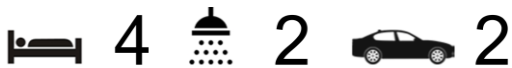
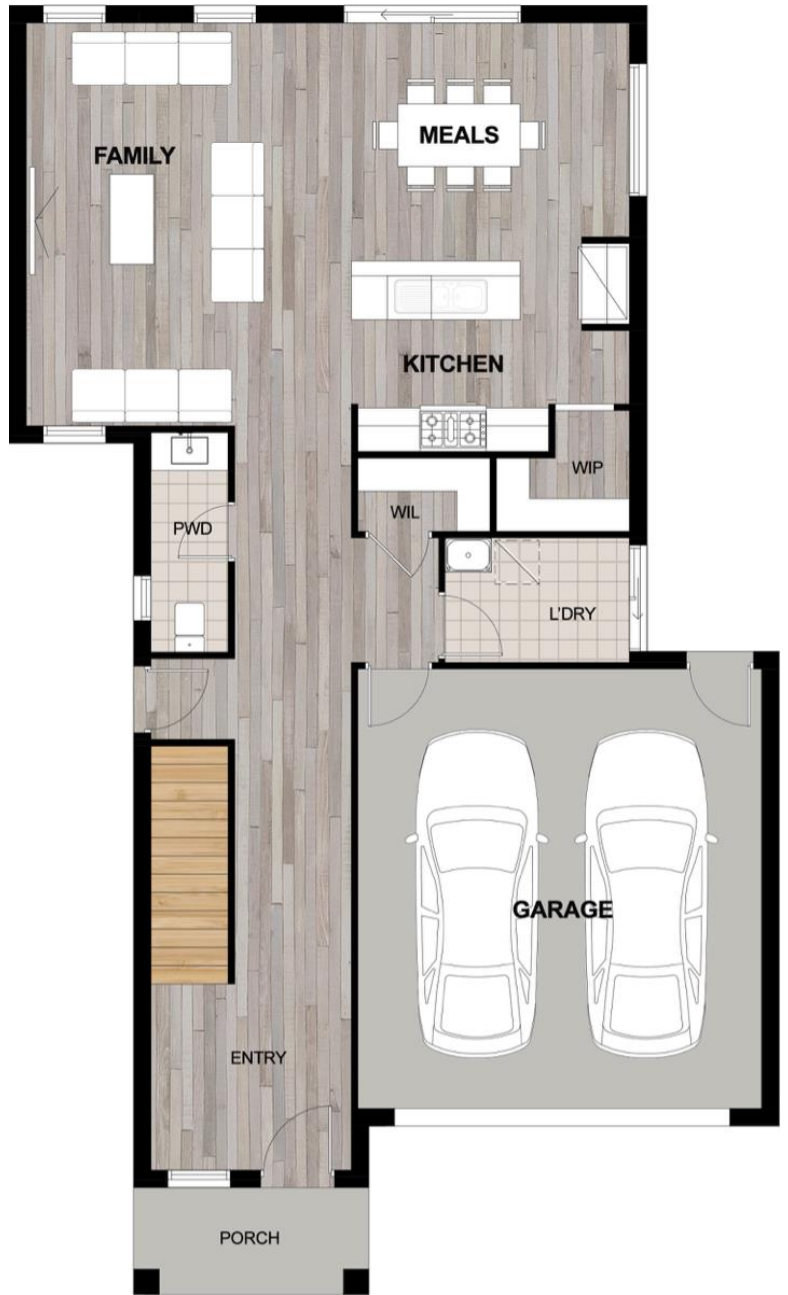
### Property Features:

- Developer Requirements
- 450mm Eaves to First Floor
- 2740mm Ceiling Height
- NBN and Recycled Water connections
- NBN smart hub
- Tiled shower bases & Heat lamps to bathrooms
- Electronic Garage Door and Remotes
- Feature Entry Door
- Stone Benches throughout
- 40mm stone to kitchen
- 900mm Westinghouse Appliances
- LED Downlights
- Evaporative Cooling
- Victorian Ash Timber Staircase
- Balcony Facade
- Builders Standard Inclusions
- Fixed site costs up to P class soil
- Floor plan full customization option\*

**Aarti Puri 0498 989 289 aarti@dulgerhomes.com.au**

# ANGELICA 2747

Suited to lot size of 10.5m x 25m



## \$745,088

Lot 5526 Cammiss Way Westbrook Edge, Truganina

Fixed Price House and Land Package\*

Aarti Puri 0498 989 289 aarti@dulgerhomes.com.au

All pictures and photos are for illustration purposes only and may not represent the final product. House and land package are based on 300mm fall & H class soil, designs, inclusions, specifications, promotions may be subject to change without notification. Prices are subject to change at the discretion of the builder. Price subject to compactions report and limited cover rocks removals. Prices are inclusive of G.S.T. \* Terms and Conditions Apply.