



Price excludes: Fencing, Landscaping, Concrete pavers, Planter boxes, Decking

FIXED PRICE

## \$827,120\*

Westbrook

Lot 5526 Cammiss Way, Truganina

### SALAMANCA 29 (LIMITED EDITION)

ALPINE FACADE

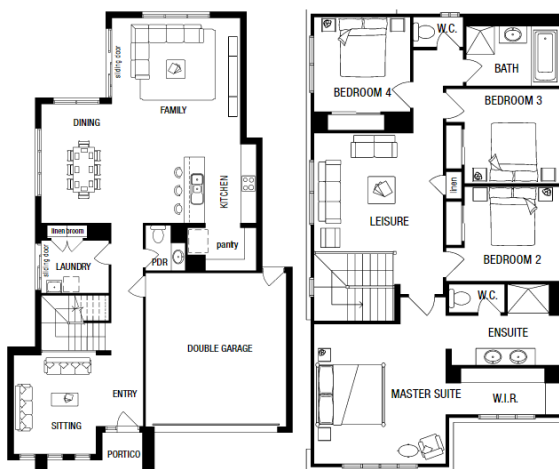
BLOCK SIZE: 350m<sup>2</sup>



**FIXED PRICE PACKAGE  
INCLUDES:**

The Salamanca 29 (LIMITED EDITION) with Alpine facade built to our industry leading base specifications, plus:

- All flooring covered throughout your entire home
- Stylish timber laminate floors & carpet to bedrooms (choice of colours)
- Quality tiles to bathrooms, ensuite and laundry
- 20mm Stone Benchtops to Kitchen
- 2 Sets of Overhead Cupboards to Kitchen
- 900mm Stainless Steel dual fuel cooker + Glass Canopy Rangehood
- Coloured Concrete driveway
- Remote controlled garage door
- Lifetime Structural Guarantee



**1300 METRICON** |  
[www.metricon.com.au](http://www.metricon.com.au)

To find out more, contact  
Christian Enares on 0413 117 251

**FREEDOM**

**m**  
metricon

\*Packages correct at time of printing and subject to change without notice. Package includes timber laminate, two strip floating floor. Luxury carpet is 100% Nylon plush pile carpet. Package price excludes external lighting, telephone service, customer account opening fees, stamp duty on land, legal fees and conveyancing costs including titles and property report. Metricon reserves the right to alter the images or descriptions in this flyer without notice. See your Metricon consultant for full details of standard inclusions. Land supplied by developer. Land prices and availability are subject to change without notice. All home & land packages are subject to developer approval. Newfield Real Estate Pty Ltd ACN 159 312 722, Licence number 028051L, VIC Builder's Licence: CDB-U 52967 #For details on our Lifetime structural guarantee visit [metricon.com.au/terms/structuralguarantee](http://metricon.com.au/terms/structuralguarantee). Package Printed Date: 13/01/2024 Price Region: Greenfields