

easy
LIVING

EXCLUSIVE

fixed price

\$584,000*

first home owners \$574,000^

WOW
INCLUSIONS##

Images for illustrative purposes only & may depict upgrade options available at additional charges such as lighting, window furnishings, timber look garage door & timber windows. Pricing also excludes features not supplied by Carlisle, inc fencing, landscaping, letterbox, decking & driveway. Façade details inc entry door, window sizes & placements may vary between house types & sizes. Refer to working drawings for specific locations and sizes.

**why
rent?**

first home owners
buy from
\$246 PER WEEK#

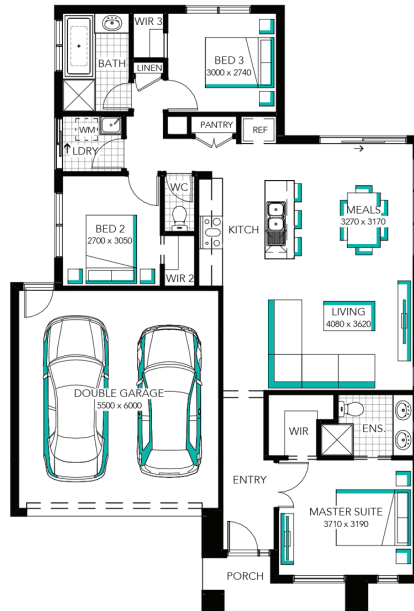
Carinya 16



Lot 5853 (263m²) Westbrook, TRUGANINA

WOW Inclusions##:

- ✓ FIXED PRICE SITE COSTS AND CONNECTIONS
- ✓ DEVELOPER AND COUNCIL REQUIREMENTS
- ✓ YOUR CHOICE OF FACADE AT NO CHARGE
- ✓ FLOORING THROUGHOUT
- ✓ 20MM CAESARSTONE EDGE TO ISLAND BENCHTOPS TO KITCHEN
- ✓ TECHNIKA STAINLESS STEEL DISHWASHER
- ✓ GLASS SPLASHBACK
- ✓ OVERHEAD CABINETS IN KITCHEN
- ✓ LAMINATE LAUNDRY CABINETRY AND STAINLESS-STEEL TROUGH
- ✓ 16 LED DOWNLIGHTS
- ✓ TOWEL RAIL OR RING AND TOILET ROLL HOLDERS
- ✓ 2110MM HIGH ALUMINIUM ENTERTAINER DOOR AND/OR ADDITIONAL ALUMINIUM SLIDING DOOR TO ALFRESCO
- ✓ ALARM SYSTEM
- ✓ 6 STAR ENERGY RATING



CARLISLE
HOMES

FOR ENQUIRIES CONTACT:

Mark Sinnott 0459 928 141 | w: easylivingbycarlisle.com.au

Or explore our Virtual Tours of our Display Homes from the comfort of your couch!



*Fixed Price current as of 18/07/2022. Fixed Pricing based on developer engineering plans & plan of subdivision. Hebel homes may be smaller than dimensions shown on the floorplan due to the external wall thickness; see working drawings for Hebel home dimensions. Confirm land prices and availability prior to purchase. Subject to developer and council approval. Price does not include any stamp duty, government, legal or bank charges. Alterations may incur additional charges. Carlisle reserves the right to withdraw or amend pricing, inclusions and promo without notice. Bushfire (BAL) requirements will be credited back to the client if Carlisle Homes receives confirmation that the house is not being constructed in a BAL designated area. This cannot be confirmed until site survey and property information from relevant authorities is received. ^Total package price minus \$10K FHOG (subject to SRO eligibility). #Repayment calculated on total package price, less 20% deposit inclusive of the \$10K First Home Owner's Grant (subject to SRO eligibility), less fees, not inclusive of lender's mortgage insurance, with a variable interest rate of 2.79% p.a., comparison rate of 3.20% p.a., and 5 years of Interest-Only repayments. ##The Wow Inclusions Promotion applies to new quotes and initial deposits on Carlisle's EasyLiving homes from 11 April 2022, and is available only in conjunction with the EasyLiving Home Designs and Reference Guide. LED downlights will be located in electrical appointment. Carlisle reserves the right to withdraw or change pricing, inclusions or promotion without notice. Speak to a Sales Consultant for further details or visit carlislehomes.com.au/disclaimer. ©2022 Carlisle Homes PTY LTD. Registered Building Practitioner CBD-U 50143.